



B-TRAXIM 2C

INNOVATIVE MINERAL SOLUTIONS

IN CHALLENGING SITUATIONS

Minerals are essential for most metabolic processes; therefore, even a slight deficiency may cause reduced animal performance and well-being. Supplementation with inorganic sources is known to be inefficient, due to mineral antagonisms, competition and interaction with feed components. Organically-bound mineral sources can improve bioavailability by preventing some of these negative interactions.

B-TRAXIM 2C is a range of organic trace minerals bound to glycine. Its patented formulation and well-known chemical crystalline structure ensures high stability and increased bioavailability compared to inorganic sources and other less stable organic mineral sources commonly used in the feed industry.



DESCRIPTION

B-TRAXIM 2C is the most concentrated organic trace mineral source in the market. It is produced through Iso-Fusion Technology which ensures purity and homogeneity in each particle for optimal use in premix and utilizing feed.

THE B-TRAXIM 2C RANGE INCLUDES:

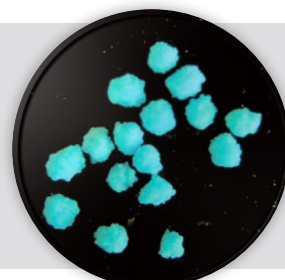
(Given metal levels are minimum guaranteed)

B-TRAXIM 2C Fe (22% iron)

B-TRAXIM 2C Cu (24% copper)

B-TRAXIM 2C Zn (26% zinc)

B-TRAXIM 2C Mn (22% manganese)



THE +

Homogenous
particle size
around
300µm

Dustless and
free-flowing

Pure
crystalline
form,
no carriers

Full stability
at different
pH

Neutral odor
and taste

ADM SOLUTIONS PARTNER

The B-Traxim 2C product line delivers targeted and effective support to meet the demands of today's livestock production, optimizing animal performance. B-Traxim 2C supports optimal development, maintenance and production, leading to higher profitability in animal operations.

Mineral supplementation in Swine

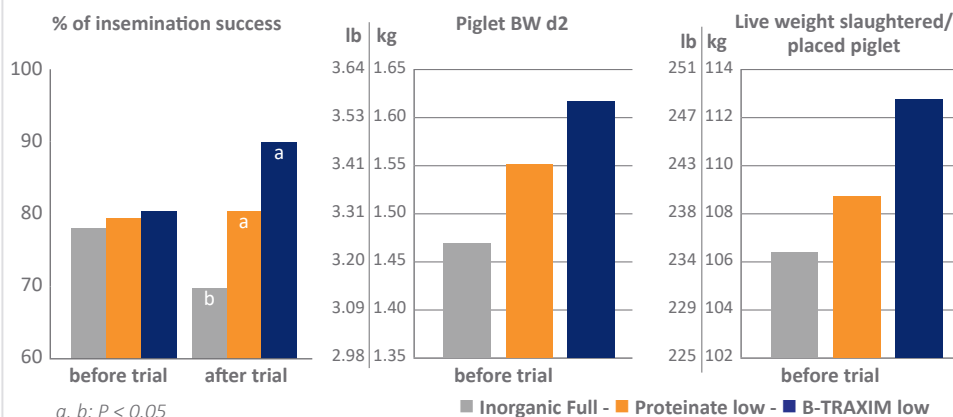


Wroclaw University of Environmental and Life Science in Poland.

Three treatments: **Inorganic Full**: commercial dose of inorganic trace minerals.

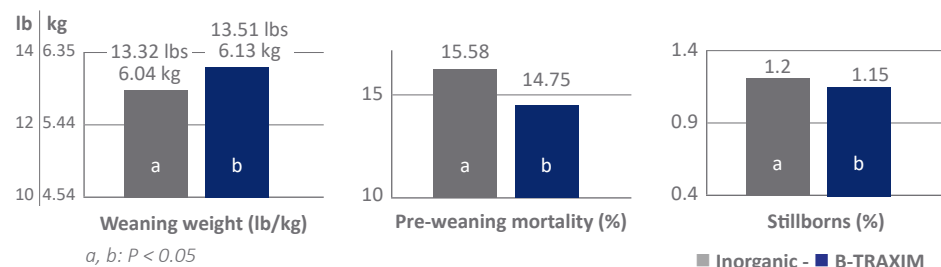
Proteinate Low: reduced dose in which 50% from **proteinate**, 50% from inorganic.

B-Traxim Low: reduced dose in which 50% from **B-Traxim 2C**, 50% from inorganic.



Commercial trial: sow operations from a Top-30 US Pork producer/ 1 year trial / commercial dose of inorganic sources (Zn/Mn/Cu/Fe @125/40/18/100ppm) vs. reduced dose of B-TRAXIM 2C glycines (Zn/Mn/Cu/Fe @75/18.75/15/60ppm).

Main results:



ADM IS YOUR GLOBAL LEADER IN ANIMAL NUTRITION

We are dedicated to enabling sustainable growth. Growth that benefits our customers, the world's population and this planet on which we live. We are one ADM Team working across a unique vertically integrated portfolio, providing exceptional levels of customer service and experience as we work together to address the three main challenges that our customers face: health through nutrition, sustainability performance and quality.