

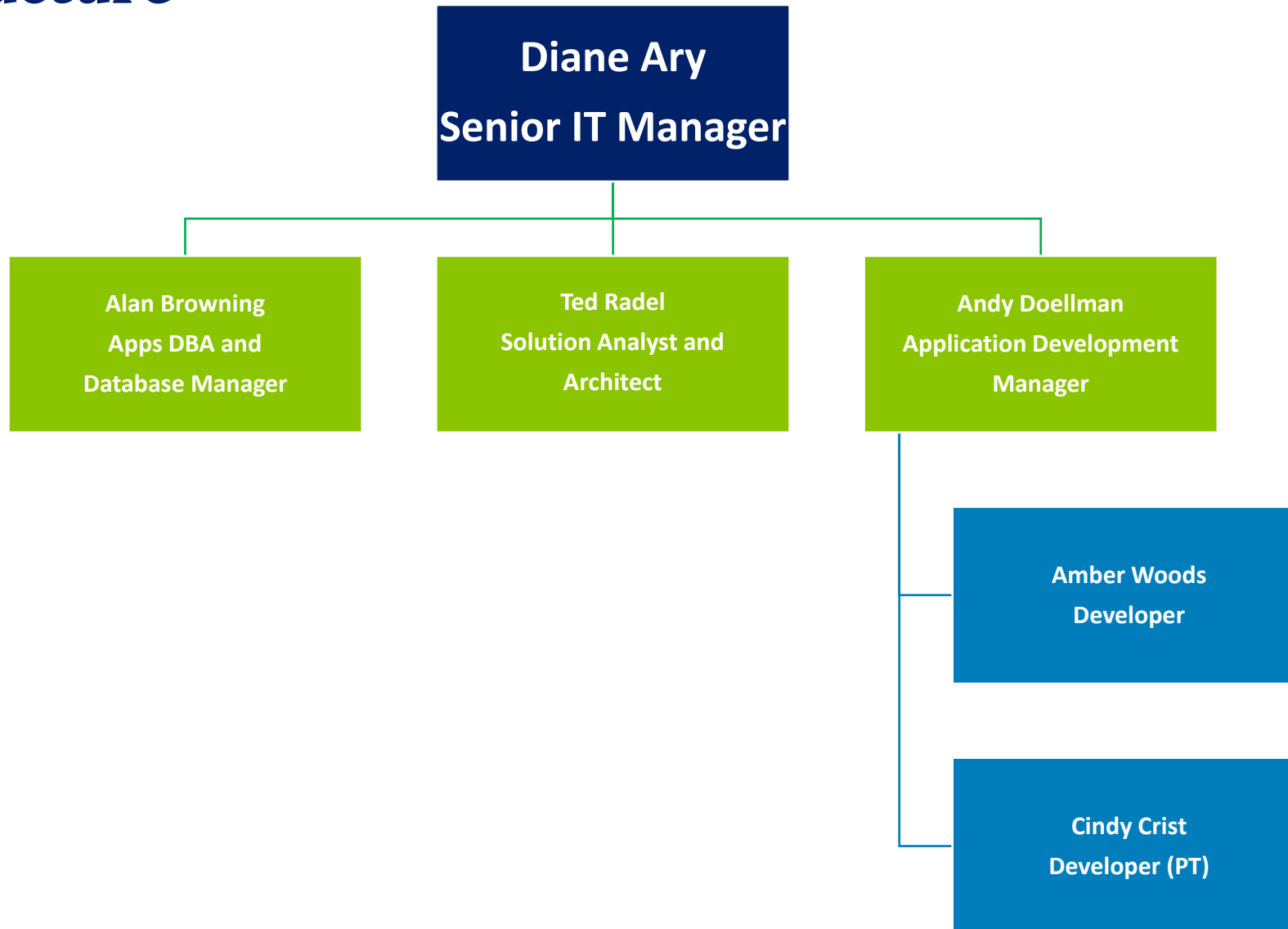


ADM Animal Nutrition Apps Service Delivery Overview

May 25, 2021



ADM Animal Nutrition Service Delivery Org Structure



ADM Animal Nutrition Service Delivery Support

Business Systems

- Oracle EBS ERP
- BI - Oracle Datawarehouse and Oracle OBIEE
- Oracle Portal – Customer/Employee Intranet
- Oracle Web Center (Public Website)

Plant Systems

- Oracle EBS ERP
- Brill (FMS)
- Adifo BESTMIX FaaS
- Batching Systems
 - WEM
 - Beta Raven
 - Interstates



Primary support for the Business and Plant Systems is provided by the Apps Service Delivery Team in Quincy, IL. We support the Feed and Pet Food/Premix divisions of Animal Nutrition in the U.S., Puerto Rico and Trinidad.

ADM Animal Nutrition Services Delivery Support – Oracle EBS



We also support all consignment, contract warehouses, blend stations, grind and mix, toll mill locations and warehouses (~50 locations)

United States

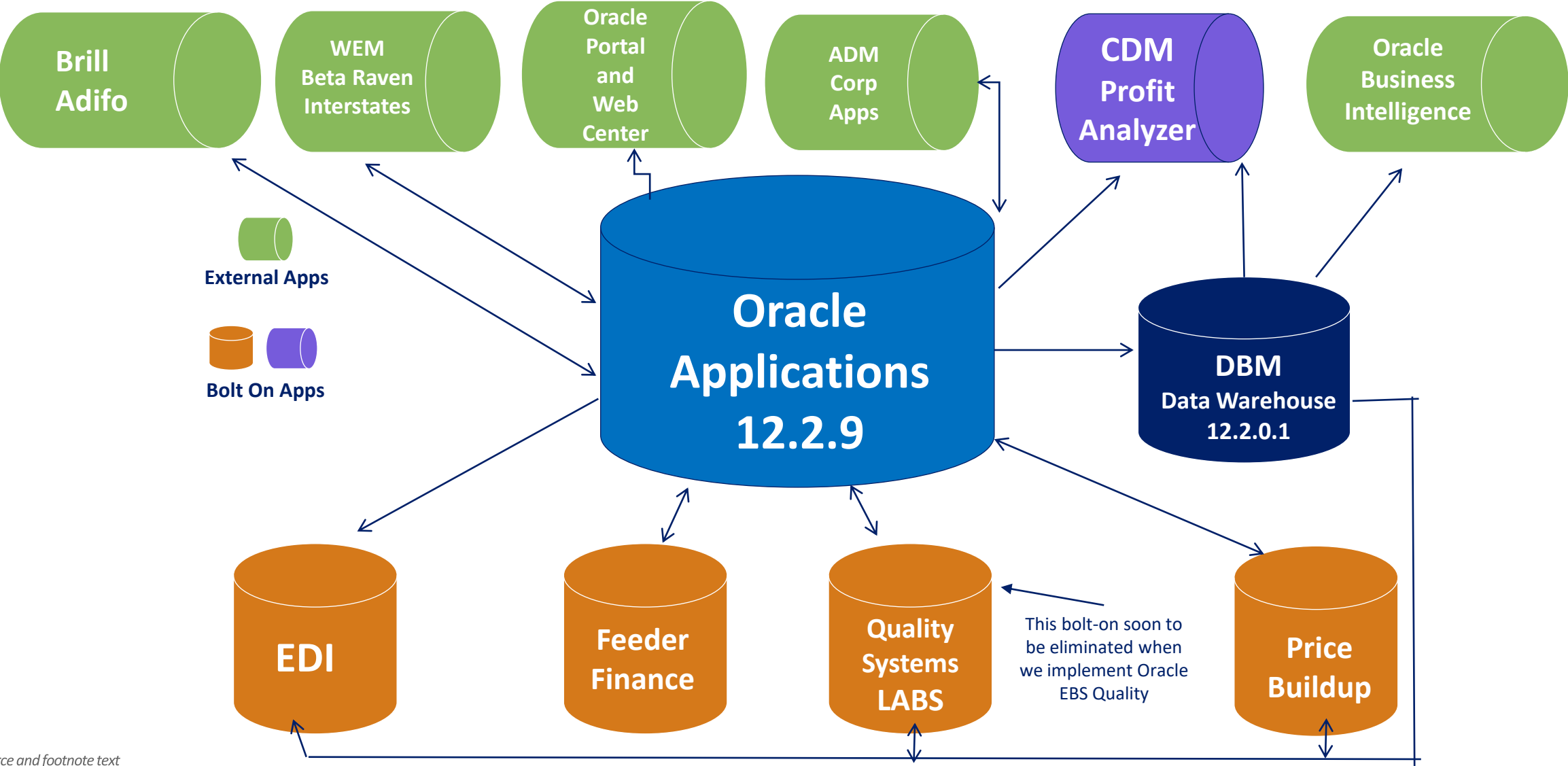
1. Abilene, KS
2. Bluffton, IN
3. Camp Hill, PA
4. Campbellsville, KY
5. Columbus, NE
6. Cordele, GA
7. Des Moines, IA
8. Effingham, IL
9. Fort Collins, CO
10. Glencoe, MN
11. Greeley, CO
12. Harvard, IL
13. Hiawatha, KS
14. Kansas City, KS
15. Mendon, IL (Research Farm)
16. Portland, MI
17. Quincy, IL
18. Sabetha, KS (3)
19. Shawnee, KS
20. Springfield, MO
21. Sugarcreek, OH
22. Topeka, KS
23. Twin Falls, ID
24. Windsor, CO

Caribbean and Trinidad

1. Barceloneta, PR
2. Guaynabo, PR
3. Hatillo, PR
4. Point Lisas, Trinidad
5. Port of Spain, Trinidad

Animal Nutrition (excluding Neovia) also has facilities in Canada, Mexico, and China. Those locations use other business systems besides Oracle EBS. However, we do support these locations for the Brill application.

ADM Animal Nutrition Oracle Application Overview



Source and footnote text

ADM Animal Nutrition Oracle ERP Overview

Oracle ERP Standard Applications – Fully Integrated

- Standard Core Applications – Fully Utilized
 - Order Management, Shipping and Scheduling, Advanced Collections, Accounts Receivable, General Ledger, Cash Management, E-Business Tax, Advanced Pricing (Agreements and Contracts), Process Manufacturing, Inventory, Quality Management, Cost Management, Mobile Supply Chain (BarCoding) Purchasing, Supplier Hub Management/Certification, Quality Management, Landed Cost Management, Accounts Payable, Centralized Payments, Portal Intranet, E-Commerce Gateway, Oracle OBIEE, and all Oracle Development Tools. **(Upgrade planned in Q3 FY22 for Oracle Portal to Oracle Web Center for our websites (customer/employee portal, marketing, and shopping carts)).**
 - We currently have integration between Oracle EBS applications and the Batching Systems (WEM, Beta Raven, and Interstates) at some of our larger plants.
- Standard Applications – Partially Utilized
 - Human Resources and Formula Management, Supply Chain Management, iProcurement
- Standard Applications – Owned, Not Currently Utilized
 - Fixed Assets, Treasury, and many other applications.

Within our Oracle EBS Suite of Applications, we own ~ 150, but only utilize ~50 modules.

ADM Animal Nutrition Oracle Platform Overview

Oracle Platform

- **Platform**
 - Oracle Exadata and Dell Vxrail x86-64 using Oracle ZFS Storage
- **Operating Systems**
 - Database - Oracle Linux 6.9
 - Application – Oracle Linux 7.8
 - Oracle Linux OBIEE / WebCenter Content and Portal
 - Windows Server 2008/2012 for 10gPortal OS, Brill and other Apps
- **Programming Languages**
 - Java, VB, PL/SQL, Oracle Forms and Reports, Linux Shell, PERL, Oracle Portal and Web Center Development
- **Database(s)**
 - 12c - Oracle Enterprise Edition 12.2.0.1 (DW) and 12.1.0.2 (APPS)
 - 11g – Oracle Portal

Oracle EBS Release 12.2.9 Architectural Diagram



ADM Animal Nutrition



Appendix A – Additional Information about Quincy IT Support and Oracle EBS Evolution

ADM Animal Nutrition Oracle ERP Support Overview

- **Division Footprint (Before Oracle EBS ERP – before 1995)**
 - U.S. Livestock feed manufacturer, primarily retail direct distribution channels
 - ~2,500 employees in U.S.
 - 7 manufacturing and several warehouse locations in U.S.
- **Division Footprint (1996 – present)**
 - More diversified (Livestock feed, Pet Food, Premix, Liquid, Specialty Ingredients, International)
 - About ½ of the employee count compared to 1995 levels (primarily as a result of using the EBS ERP integrated system).
 - 75+ plant and warehouse locations (including U.S. and Caribbean).
 - We currently do not provide primary business application support for Canada or China since they are on different systems (IBM, JDE, etc.)



ADM Oracle EBS ERP

How It All Began?

- IT Strategy began in 1994
- Business Process Reengineering in 1994 – 1995
- Business Requirements and Gap Analysis in 1995
- Software Selection in 1995
(Top 2 narrowed to Oracle EBS & SAP)
- Implementation – September 1996
- Partnered with remote locations and pilots conducted in the field.
- Multiple software, database & hardware upgrades from 1996 to now. Last application and database upgrade was October 2020.



ADM Oracle EBS ERP – Implementation Success Factors

- Strong and Mature IT Business Alignment
 - IT has served on the AN Strategy Team
 - AN leaders served on the IT Steering Committee
- Secured Top Management Support and Involvement
- Linked to Division Strategy and Maintained Customer Focus
 - IT is enabler and has active role in AN strategy and direction
- Maximized IT investments by leveraging the features of the ERP system for the greatest ROI and benefits for AN – Integration is Key!
- Applied the KISS principle (Keep it Simple and Straightforward) and the 80/20 rule
- Avoided all code customizations (unless deemed business critical and approved by senior level management)
- Drove participation through all divisional colleagues
- Continuous Training and Education for all colleagues is critical!
- ‘All Hands-on Deck’ implementations



ADM Oracle EBS ERP – Continued Results and Benefits

- Rapid installation of acquisitions (*doubled footprint of the business since 1996*)
- Maintained and grew profitability, even with changing market conditions
- Reduced IT Staff by over 70%, while growing the division footprint through acquisitions
- Additional Other Administrative Staff Reductions
- Reduced Financial Close Days by 50%
- Targeted reductions in SG&A expenses
- Reduced finished product Inventory levels
- Improved load optimization
- Eliminated redundancy of data entry and storage; and manual paper systems
- Eliminated non-value activity and processes
- Integrated, streamlined and automated business processes
- End-to-end view across all lines of our business and functions
- Managed from a single site and operates on a single database
- Automated Tax Engine Calculations and Reporting
- Drastic reductions in coding customizations
- Improved Data Security
- Based on standard processes and best practices, but flexible to meet industry specific standards
- Accelerated system solutions deployment
- Accurate and timely business information
- Adaptable to global business
- Supports multiple languages, currencies and global localizations
- Open and extensible to meet requirements of different industries
- Streamlined user interface
- Self-Service Reporting
- Certified and Ongoing Compliance with SOX and Global Regulations
- Highly Configurable (w/o programming and customizations)
- Oracle Centralized Payment Functionality (within AN)
- Multiple and Simultaneous Accounting Representations (U.S. GAAP and IFRS)

Thank You

