

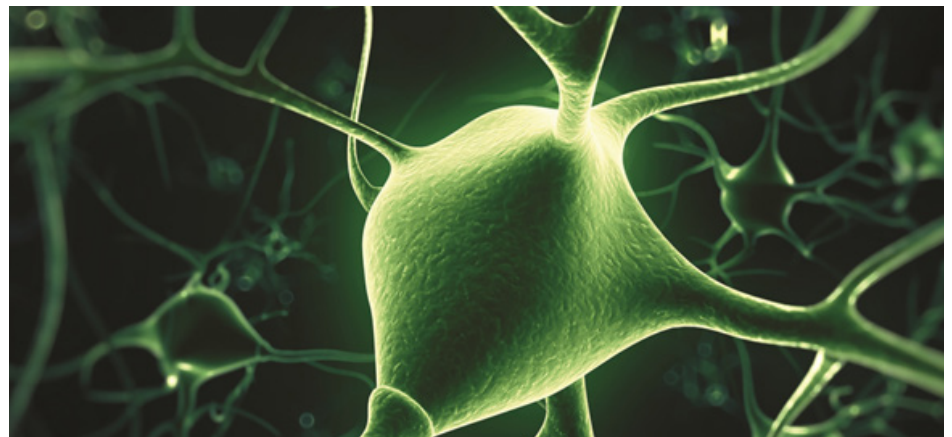


**INNOVATIVE
BIOACTIVE
SOLUTIONS**

IN CHALLENGING SITUATIONS

The transition period for dairy cows is a challenging time due to metabolic changes from a non-lactating to lactating state which leads to a massive demand for glucose by the mammary gland. Optimizing glucose partitioning is a key factor to improve lactation efficiency.

To support that process, dairy cows display lower insulin sensitivity to ensure enough glucose is available to the udder, while reducing glucose absorption in other tissues. This is called 'glucose sparing.' Milk production can be improved by promoting this "glucose sparing" effect and reducing the inhibition of gluconeogenesis.

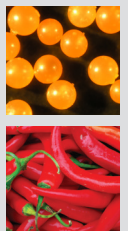


DESCRIPTION

Our phytogenics product line results from an ambitious 20-year scientific program. The foundation of this product line is the specific knowledge on phyto-molecules and their primary effects.



Nexulin is based on standardized micro-encapsulated and rumen protected capsaicinoids, compounds that are naturally present in chili peppers (from Capsicum genus plants).*



THE +

Rumen
protected
natural sourced
ingredient

Optimal
adaptation
to transition
period

Helps to
maximize milk
yield

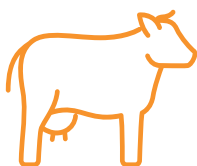
Micro-
encapsulation
for optimal
stability

Transparency
and guaranteed
composition

ADM SOLUTIONS PARTNER

Based on a clear understanding of your concerns, Nexulin delivers sustainable and cost-effective support to optimize dairy cow performance.

Proven consistent results have shown that when fed 21 days pre-calving to 100 days of lactation, Nexulin aids dairy cows to have a more efficient lactation cycle supporting transition and alleviating the energy deficiency during early lactation.



Improves performance supporting the transition period by:

- Increasing milk production without altering milk composition
- Improving feed efficiency without increasing body reserves mobilization
- Increasing fat and protein yield

Microencapsulation by ISO-FUSION technology:

- Protection of active ingredients for optimal stability
- Homogeneous particle size
- Optimal flowability
- Equal proportion of active ingredients in each particle
- Optimized handling
- A consistent response in *in vivo* animal trials



APPLICATIONS

Nexulin can be supplemented in complete feed, concentrates and premixes. Is not recommended for inclusion in free-choice minerals.

Recommended inclusion rate:

Dairy cows (recommend in transition and early lactation),
21 days pre-calving to 100 days of lactation.

Nexulin, code N60-3300: 100 mg/animal/day

Nexulin PX, code N61-3301: 1 g/animal/day

Nexulin FM, code: N60-3302: 5 g/animal/day



Contact your local representative for more information on the benefits of Nexulin and tailored application to your specific conditions.

ADM IS YOUR GLOBAL LEADER IN ANIMAL NUTRITION

We are dedicated to enabling sustainable growth. Growth that benefits our customers, the world's population and this planet on which we live. We are One ADM Team working across a unique vertically integrated portfolio, providing exceptional levels of customer service and experience as we work together to address the three main challenges that our customers face: health through nutrition, performance & quality, and sustainability.