

The background of the top half of the page is a close-up photograph of several bright red apples. A wooden stick is inserted into the top of one of the apples in the center. The apples are highly reflective, showing highlights and shadows. The overall color palette is dominated by reds and oranges.

INNOVATIVE SWEETENING SOLUTIONS

SUCRAM



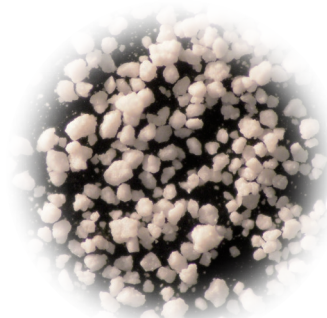
PRODUCT DESCRIPTIONS AND FEATURES

SUCRAM is a **unique patented high intensity sweetener and taste enhancer** developed for use in a wide variety of animal nutrition products.

SUCRAM has a unique and sophisticated sweetness similar to sucrose with a long and enhanced sweet taste perception. It is therefore the perfect tool for reaching palatability and feed intake targets.

Regarding intensity, SUCRAM is **hundreds of times sweeter than sucrose**.

SUCRAM is the result of the intimate combination of **high intensity sweetener and sensory enhancers** in an atomized microparticle.



SUCRAM particles

UNIQUE PROPERTIES & FOCUS ON TECHNOLOGY

SUCRAM benefits from a specific spray granulation manufacturing process. All the separate active ingredients within the formulation are combined in **micro size particles**. Proportions are **constant and equal** from one particle to another.

- **HOMOGENEOUS PRODUCT & PARTICLE SIZE**
- **DUSTLESS & FREE FLOWING**
- **GOOD DISPERSION IN FEED**
- **ACCURATE RELEASE**
- **100% WATER SOLUBLE**

SCIENTIFIC PUBLICATIONS

- 2013, Furness, et al.: The gut as a sensory organ. Nature Reviews. Gastroenterol. Hepatol. 10(12):729.
- 2014, Moran, et al.: Sweet taste receptor expression in ruminant intestine and its activation by artificial sweeteners to regulate glucose absorption. Journal of Dairy Science. 97 (8): 4955–4972.
- 2015, Wall, et al. Abstract: Supplementation with artificial sweetener improves milk yield and composition and alters nutrient partitioning in lactating dairy cows.
- 2016, Connor, et al. DAE: Glucagon-like peptide 2 and its beneficial effects on gut function and health in production animals.

FEEDING RECOMMENDATIONS, PRODUCT CODE, PACKAGING

- SUCRAM C-150, code 6834; 25 kg bags;
 - Weanling piglets: 50 – 150 g/t
- SUCRAM C-150.835, code 6835; 25 kg bags;
 - Pigs – 50-150 g/t
 - Calves and small ruminants – 0.5 g/hd/day
 - Growing cattle – 1 g/hd/day
 - Mature cows – 2 g/hd/day

adm.com/animalnutrition

US Region | General Release
SM0327-1023