

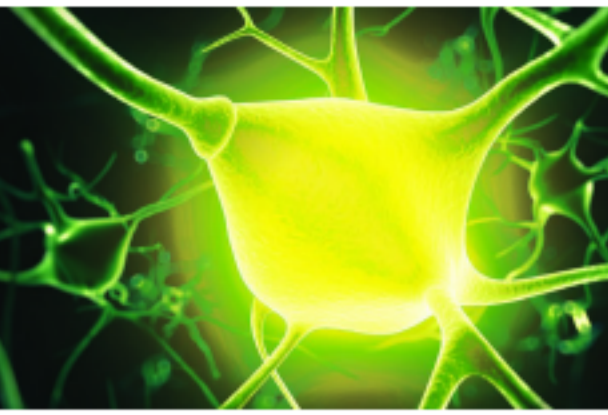


NOVULIN

**INNOVATIVE SOLUTIONS  
FROM NATURE**



# nexulin



## PRODUCT DESCRIPTION AND FEATURES

Nexulin is a proprietary technology offered exclusively from Pancosma to support dairy cows. It consists of a single active phytomolecule uniquely selected from nature. When fed pre-partum through the first 120 days of lactation, Nexulin aids dairy cows to have a more efficient lactation cycle.



### HIGH STANDARD LEVELS

Every batch is standardized and its content is guaranteed for levels in:



☑ *Capsicum Oleoresin*

### PEER REVIEWED PUBLICATIONS

☑ Effects of rumen-protected *Capsicum* oleoresin on immune responses in dairy cows intravenously challenged with lipopolysaccharide.

Oh, J., M. Harper, F. Giallongo, E. H. Wall, D. Bravo, A. N. Hristov. 2017a, J. Dairy Sci. 100:1902–1913.

☑ Effects of rumen-protected *Capsicum* oleoresin on productivity and responses to a glucose tolerance test in lactating dairy cows.

Oh, J., M. Harper, F. Giallongo, E. H. Wall, D. M. Bravo, A. N. Hristov. 2017b, J. Dairy Sci. 100:1888–1901.

## PROTECTED BY ISO-FUSION TECHNOLOGY

Nexulin is manufactured using ISO-FUSION Technology (spray cooling).



Patented Iso-Fusion Micro-encapsulation Technology protects the integrity of the specifically-selected phytomolecule in Nexulin.

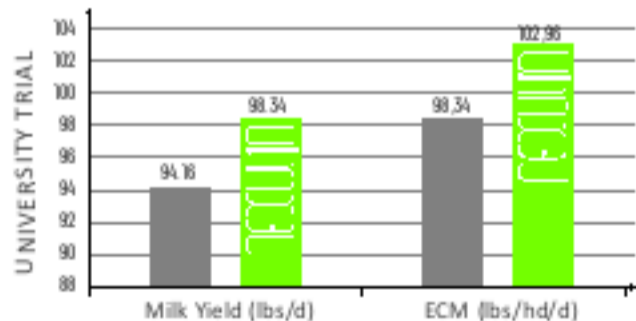


✓ Protection of active ingredients for optimal stability and bioavailability

✓ Homogeneous particle size for optimal flowability

✓ Equal proportion of active ingredients in each particle

## UNIVERSITY & FARM PROVEN TECHNOLOGY



## FEEDING RECOMMENDATIONS

- ☑ Pre-Fresh (or Transition) Cows (to be fed 21 days pre-calving): 1 g/hd/day (.0022 lb.) within a custom mix (or Prospanse MAX-GPS for mixing at 1 oz./hd/day)
- ☑ Lactating Dairy Cows (to be fed the first 120 days of lactation): 1 g/hd/day (.0022 lb.) within a custom mix (or Prospanse MAX-GPS for mixing at 1 oz./hd/day)

Note that Nexulin:

- ☑ Is a certified Non-GMO, Non-Animal Protein technology
- ☑ Is not recommended for inclusion in pelleted feeds
- ☑ Is not recommended for inclusion in free-choice minerals

[adm.com/DairySolutions](http://adm.com/DairySolutions)

US Region | General Release  
SM0410-0923

