

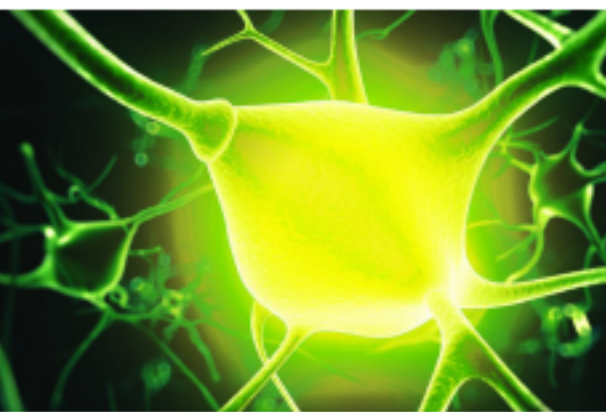


NOULIN

**INNOVATIVE SOLUTIONS
FROM NATURE**



nexulin



PRODUCT DESCRIPTION AND FEATURES

Nexulin is a proprietary technology offered exclusively from Pancosma to support dairy cows. It consists of a single active phytomolecule uniquely selected from nature. When fed pre-partum through the first 120 days of lactation, Nexulin aids dairy cows to have a more efficient lactation cycle.



HIGH STANDARD LEVELS

Every batch is standardized and its content is guaranteed for levels in:



☐ *Capsicum Oleoresin*

PEER REVIEWED PUBLICATIONS

☐ Effects of rumen-protected *Capsicum* oleoresin on immune responses in dairy cows intravenously challenged with lipopolysaccharide.

Oh, J., M. Harper, F. Giallongo, E. H. Wall, D. Bravo, A. N. Hristov. 2017a, J. Dairy Sci. 100:1902–1913.

☐ Effects of rumen-protected *Capsicum* oleoresin on productivity and responses to a glucose tolerance test in lactating dairy cows.

Oh, J., M. Harper, F. Giallongo, E. H. Wall, D. M. Bravo, A. N. Hristov. 2017b, J. Dairy Sci. 100:1888–1901.

PROTECTED BY ISO-FUSION TECHNOLOGY

Nexulin is manufactured using ISO-FUSION Technology (spray cooling).



Patented Iso-Fusion Micro-encapsulation Technology protects the integrity of the specifically-selected phytomolecule in Nexulin.

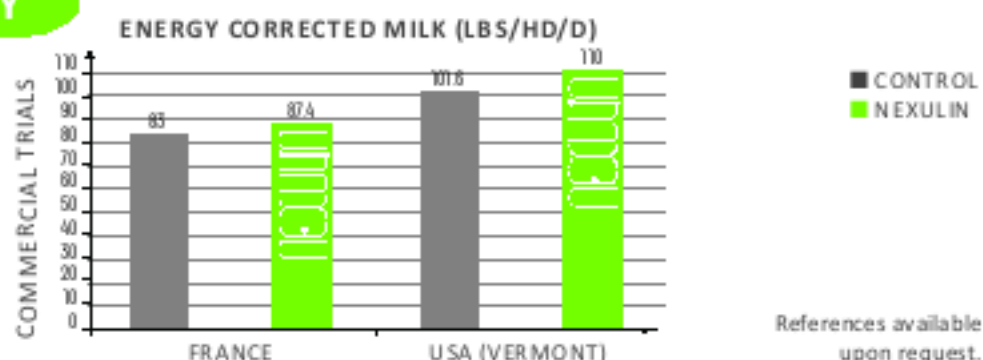
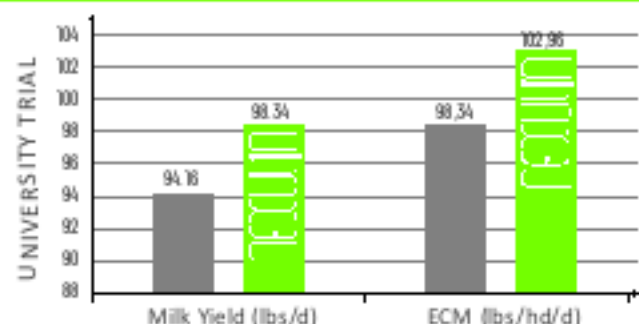


✓ Protection of active ingredients for optimal stability and bioavailability

✓ Homogeneous particle size for optimal flowability

✓ Equal proportion of active ingredients in each particle

UNIVERSITY & FARM PROVEN TECHNOLOGY



FEEDING RECOMMENDATIONS

☐ Pre-Fresh (or Transition) Cows (to be fed 21 days pre-calving): 1 g/hd/day (.0022 lb.) within a custom mix (or Prospanse MAX-GPS for mixing at 1 oz./hd/day)

☐ Lactating Dairy Cows (to be fed the first 120 days of lactation): 1 g/hd/day (.0022 lb.) within a custom mix (or Prospanse MAX-GPS for mixing at 1 oz./hd/day)

Note that Nexulin:

- ☐ Is a certified Non-GMO, Non-Animal Protein technology
- ☐ Is not recommended for inclusion in pelleted feeds
- ☐ Is not recommended for inclusion in free-choice minerals


Pancosma
 makes sense

Bill Earley
 Dairy Business Manager
 800-777-7692 ext. 239
 bill.earley@adm.com



FAMIQs

