



noculin

**INNOVATIVE SOLUTIONS  
FROM NATURE**



## PRODUCT DESCRIPTION AND FEATURES

Nexulin is a proprietary technology offered exclusively from Pancosma to support dairy cows. It consists of a single active phytomolecule uniquely selected from nature. When fed pre-partum through the first 120 days of lactation, Nexulin aids dairy cows to have a more efficient lactation cycle.



### HIGH STANDARD LEVELS

Every batch is standardized and its content is guaranteed for levels in:



- *Capsicum Oleoresin*

### PEER REVIEWED PUBLICATIONS

- Effects of rumen-protected *Capsicum* oleoresin on immune responses in dairy cows intravenously challenged with lipopolysaccharide.

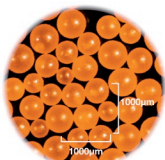
Oh, J., M. Harper, F. Giallongo, E. H. Wall, D. Bravo, A. N. Hristov. 2017a, J. Dairy Sci. 100:1902–1913.

- Effects of rumen-protected *Capsicum* oleoresin on productivity and responses to a glucose tolerance test in lactating dairy cows.

Oh, J., M. Harper, F. Giallongo, E. H. Wall, D. M. Bravo, A. N. Hristov. 2017b, J. Dairy Sci. 100:1888–1901.

## PROTECTED BY ISO-FUSION TECHNOLOGY

Nexulin is manufactured using ISO-FUSION Technology (spray cooling).

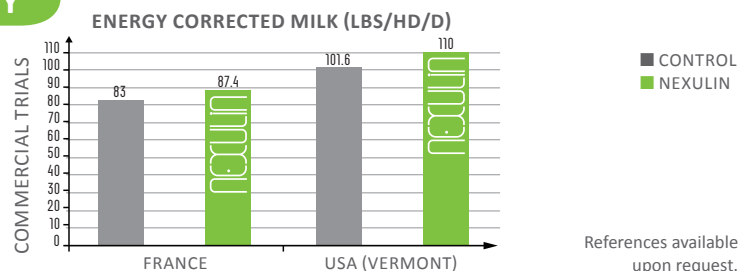
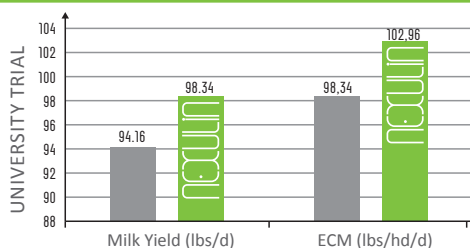


Patented Iso-Fusion Micro-encapsulation Technology protects the integrity of the specifically-selected phytomolecule in Nexulin.



- ✓ Protection of active ingredients for optimal stability and bioavailability
- ✓ Homogeneous particle size for optimal flowability
- ✓ Equal proportion of active ingredients in each particle

## UNIVERSITY & FARM PROVEN TECHNOLOGY



## FEEDING RECOMMENDATIONS

- Pre-Fresh (or Transition) Cows (to be fed 21 days pre-calving): 1 g/hd/day (.0022 lb.) within a custom mix (or Proponse MAX-GPS for mixing at 1 oz./hd/day)
- Lactating Dairy Cows (to be fed the first 120 days of lactation): 1 g/hd/day (.0022 lb.) within a custom mix (or Proponse MAX-GPS for mixing at 1 oz./hd/day)

Note that Nexulin:

- Is a certified Non-GMO, Non- Animal Protein technology
- Is not recommended for inclusion in pelleted feeds
- Is not recommended for inclusion in free-choice minerals

**Pancosma**  
makes sense

Bill Earley  
Dairy Business Manager  
800-777-7692 ext. 239  
bill.earley@adm.com



**FAMI-QS**

